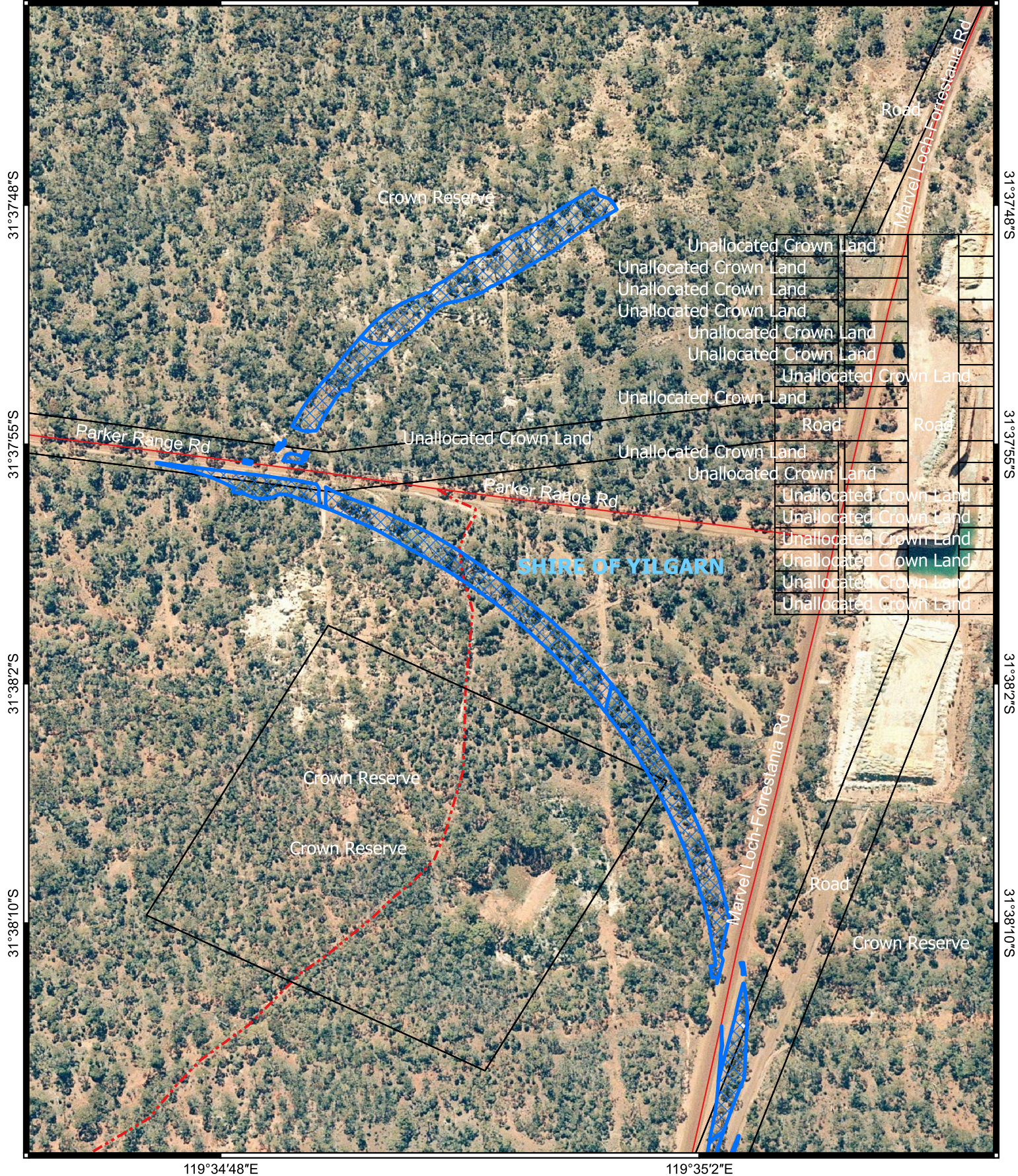


# CPS 10544/1 - Map L

119°34'48"E

119°35'2"E



119°34'48"E

119°35'2"E

## Legend

-  CPS areas applied to clear Roads
-  Land Tenure
-  Local Government Authorities
- Roads**
-  Road Classification: Minor
-  Track



0 100 m



1:3,000

Projection: GDA2020



**GOVERNMENT OF  
WESTERN AUSTRALIA**